

*Elongated Chinese Elm*

*Flowering crepe Myrtle*

EXTEND TRAFFIC ISLAND TO ENSURE ONE WAY TRAFFIC IN ONE WAY STREET  
SUBJECT TO APPROVAL BY TRAFFIC COMMITTEE

NEW NATIVE PLANTS TO 500MM WITH TREE  
Chinese Elm (*Ulmus parvifolia*) underplanted with *Lomandra 'Tanika'*

REMOVE EXISTING PAVING GRATED DRAIN AND TREES. REPLACE GRATED DRAIN WITH PITS AND UNDERGROUND PIPES

NEW COLOURED CONCRETE PAVING WITH SPRAYED SURFACE OVER PROVIDING CONTRASTING BANDS OF COLOUR

INSTALL MOUNDS OF NATIVE GRASSES TO REDUCE PAVEMENT SURFACE AND ASSOCIATED HEAT AND GLARE. MAXIMUM SLOPE 1:4. MAXIMUM HEIGHT: 1 METRE

NEW HARDY MEDIUM SCALE DECIDUOUS STREET TREES IN PAVING  
Chinese tallowood (*Sapium sebiferum*)

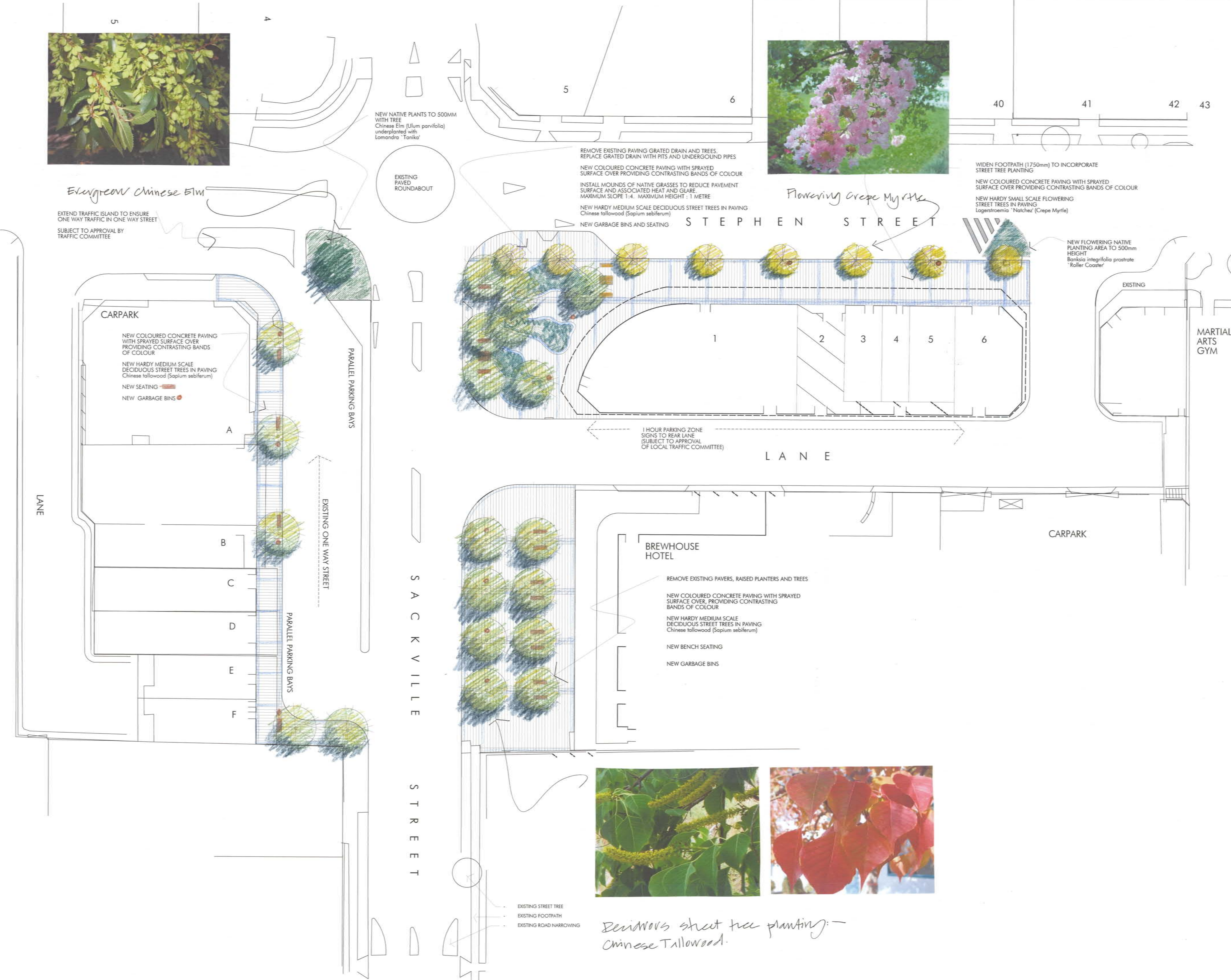
NEW GARBAGE BINS AND SEATING

WIDEN FOOTPATH (1750mm) TO INCORPORATE STREET TREE PLANTING

NEW COLOURED CONCRETE PAVING WITH SPRAYED SURFACE OVER PROVIDING CONTRASTING BANDS OF COLOUR

NEW HARDY SMALL SCALE FLOWERING STREET TREES IN PAVING  
*Lagerstroemia 'Natchez'* (Crepe Myrtle)

NEW FLOWERING NATIVE PLANTING AREA TO 500mm HEIGHT  
*Banksia integrifolia prostrate* 'Roller Coaster'



1 HOUR PARKING ZONE  
SIGNS TO REAR LANE  
(SUBJECT TO APPROVAL OF LOCAL TRAFFIC COMMITTEE)

BREWHOUSE HOTEL

REMOVE EXISTING PAVERS, RAISED PLANTERS AND TREES

NEW COLOURED CONCRETE PAVING WITH SPRAYED SURFACE OVER, PROVIDING CONTRASTING BANDS OF COLOUR

NEW HARDY MEDIUM SCALE DECIDUOUS STREET TREES IN PAVING  
Chinese tallowood (*Sapium sebiferum*)

NEW BENCH SEATING

NEW GARBAGE BINS



*Deciduous street tree planting: - Chinese Tallowood.*

| D     | MINOR AMENDMENTS            | 20.03.09 | LH |
|-------|-----------------------------|----------|----|
| C     | MINOR AMENDMENTS            | 15.01.09 | LH |
| B     | FOR FINAL REVIEW BY COUNCIL | 17.12.08 | LH |
| A     | FOR COMMUNITY CONSULTATION  | 3.07.08  | LH |
| Issue | Amendment                   | Date     | By |

Town Planner and Community Consultation Consultant  
K R Nash & Associates Pty Ltd

131 Darling Street  
Balmain NSW 2041  
Telephone  
02 9818 3095  
Facsimile  
02 9810 5493  
Email  
knash@sydney.com.au

Landscape Architect  
Lorna Harrison Pty Ltd  
68 Beattie Street  
Balmain NSW 2041  
Telephone  
02 9555 1147  
Facsimile  
9555 1148  
Email  
lorna@landarchitects.com  
ABN 05 003 558 450

Client  
BLACKTOWN CITY COUNCIL  
62 Flushcombe Road  
BLACKTOWN  
www.blacktown.nsw.gov.au  
tel 02 9839 6305  
fax 02 9672 3381

Project  
LALOR PARK  
COMMERCIAL PRECINCT  
URBAN DESIGN IMPROVEMENT

Drawing Title  
LANDSCAPE SKETCH PLAN 'D'

Scale  
1:200

Project/Drawing Number  
480

Verify all dimensions shown at the site. Work only to agreed dimensions. Do not scale the drawings. Report any discrepancies to the Architect for decisions and clarification. This drawing should be read in conjunction with the relevant Contracts, Specifications, and Drawings. This drawing is Copyright and must not be used, reproduced, or copied wholly or in part without written permission of the owners. Copyright is the property of Lorna Harrison Pty Ltd.

Plot date  
Approved/date  
Checked/date

Issue  
A B C D E F G H I J K L M N O P Q R S T U V W X Y Z