

inside **Blacktown** City

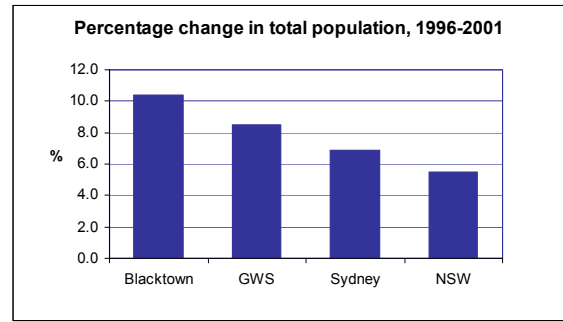
A statistical brochure compiled using ABS 2001 census information



1 POPULATION

Total population	1996	2001	% change
Blacktown	232,219	256,364	+10.4
GWS	1,584,371	1,718,939	+8.5
Sydney	3,741,299	3,997,321	+6.8
NSW	6,038,706	6,371,745	+5.5

GWS = Greater Western Sydney
Source: ABS Census 1996 & 2001, Tables B01



2 AGE DISTRIBUTION

Age group	Blacktown		GWS	Sydney
	Persons	%	%	%
0-4 years	22,202	8.7	7.7	6.6
5-9 years	22,223	8.7	8.0	6.8
10-14 years	20,059	7.8	7.7	6.6
15-19 years	19,566	7.6	7.6	6.8
20-24 years	18,507	7.2	7.1	7.0
25-39 years	61,712	24.1	23.1	23.7
40-54 years	52,126	20.3	21.1	20.8
55-64 years	19,424	7.6	8.1	8.7
65-74 years	11,965	4.7	5.2	6.2
Over 74 years	8,580	3.3	4.5	6.8
Total*	256,364	100.0	100.0	100.0

*includes overseas visitors
Source: ABS Census 2001, Table B03

3 ABORIGINAL & TORRES STRAIT ISLANDERS

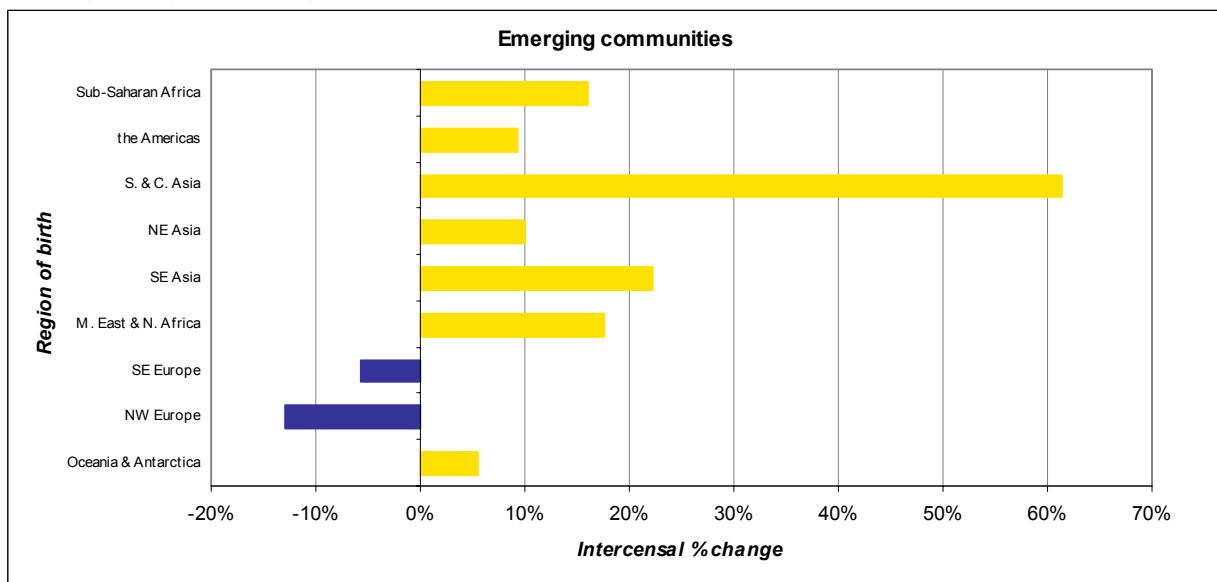
Year	Blacktown		GWS	Sydney	NSW
	Persons	%	%	%	%
1996	5,240	2.3	1.3	0.9	1.6
2001	6,093	2.4	1.4	1.0	1.9

Source: ABS Census 2001, Table B01

Emerging communities

Blacktown	Oceania & Antarctica	NW Europe	SE Europe	M. East & N. Africa	SE Asia	NE Asia	S. & C. Asia	the Americas	Sub-Saharan Africa	Other	Not stated	Total
1996	160,513	14,594	14,370	6,478	14,138	3,874	5,323	2,698	2,072	128	7,321	232,219
2001	169,304	12,697	13,555	7,622	17,274	4,259	8,589	2,951	2,406	384	16,154	256,364
Change	8,791	-1,897	-815	1,144	3,136	385	3,266	253	334	256	8,833	24,145
%	5.5	-13.0	-5.7	17.7	22.2	9.9	61.4	9.4	16.1	200.0	120.7	10.4

Source: ABS Census 2001, Table B07; ABS Census 1996, Table B06



4 CULTURAL DIVERSITY

Birthplace

	Blacktown		GWS	Sydney	NSW
	Persons	%	%	%	%
Australia	156,794	61.2	61.4	61.4	69.9
Total OSB*	99,570	38.8	38.6	38.6	30.1
Total NESB^	82,337	32.1	32.2	30.4	23.0
NESB as % of OSB	-	82.7	83.4	78.8	76.3

* OSB = Overseas born ^ NESB = Non-English Speaking Background
Source: ABS Census 2001, Table B06

Birthplace - Major English Speaking Countries

	Blacktown		GWS	Sydney	NSW
	Persons	%	%	%	%
Australia	156,794	9.1	61.4	61.4	69.9
UK	9,200	0.5	3.8	4.6	4.3
NZ	5,671	0.3	1.7	2.1	1.7
S. Africa	1,173	0.1	0.4	0.6	0.4
USA	401	0.0	0.2	0.4	0.3
Ireland	596	0.0	0.3	0.4	0.3
Canada	192	0.0	0.1	0.1	0.1

Source: ABS Census 2001, Table B06

Birthplace – Non-English Speaking Background Countries

	Blacktown			GWS		Sydney		NSW	
	Persons	% total	% NESB	% total	% NESB	% total	% NESB	% total	% NESB
Philippines	13,612	5.3	16.5	1.8	5.7	1.2	3.9	0.8	3.6
India	4,363	1.7	5.3	1.1	3.3	0.9	2.8	0.6	2.6
Fiji	4,247	1.7	5.2	1.0	3.2	0.6	2.1	0.4	1.8
Malta	3,255	1.3	4.0	0.7	2.2	0.4	1.3	0.3	1.3
China	2,226	0.9	2.7	1.7	5.2	2.1	6.7	1.3	5.8
Sri Lanka	1,926	0.8	2.3	0.5	1.6	0.4	1.3	0.3	1.2
Italy	1,861	0.7	2.3	1.1	3.6	1.2	4.0	1.0	4.1
Lebanon	1,609	0.6	2.0	1.9	5.8	1.3	4.3	0.8	3.6
Egypt	1,568	0.6	1.9	0.4	1.2	0.4	1.4	0.3	1.2
Croatia	1,357	0.5	1.6	0.6	1.7	0.4	1.3	0.3	1.3
Poland	1,353	0.5	1.6	0.4	1.3	0.3	1.1	0.3	1.2
Germany	1,249	0.5	1.5	0.5	1.6	0.5	1.6	0.5	2.2
Yugoslavia, FR [^] of	1,233	0.5	1.5	0.6	1.8	0.4	1.3	0.3	1.3
Turkey	1,226	0.5	1.5	0.4	1.3	0.3	0.9	0.2	0.8
South Korea	1,073	0.4	1.3	0.5	1.5	0.7	2.2	0.4	1.9
Malaysia	916	0.4	1.1	0.3	1.1	0.5	1.6	0.3	1.4
Greece	909	0.4	1.1	0.5	1.5	0.8	2.8	0.6	2.5
Vietnam	868	0.3	1.1	2.7	8.4	1.5	5.1	1.0	4.3
Netherlands	827	0.3	1.0	0.3	0.9	0.3	1.0	0.3	1.4
Indonesia	744	0.3	0.9	0.2	0.7	0.5	1.6	0.3	1.4
Hong Kong	741	0.3	0.9	0.5	1.6	0.9	3.0	0.6	2.6
Singapore	306	0.1	0.4	0.1	0.3	0.2	0.6	0.1	0.6
Macedonia, FYR* of	235	0.1	0.3	0.3	0.9	0.3	1.0	0.3	1.3
France	149	0.1	0.2	0.1	0.2	0.1	0.4	0.1	0.4
Born elsewhere O/S	17,161	6.7	20.8	7.5	23.3	5.9	19.3	4.6	19.8

[^] FR = Former Republic

* FYR = Former Yugoslav Republic

Source: ABS Census 2001, Table B06

Language spoken at home

	Blacktown			GWS		Sydney		NSW	
	Persons	% total	% LOTE	% total	% LOTE	% total	% LOTE	% total	% LOTE
Tagalog (Filipino)	13,032	5.1	17.7	1.7	5.1	1.0	3.7	0.7	3.6
Other*	12,653	4.9	17.1	4.2	13.1	3.3	12.1	2.3	12.4
Arabic	7,339	2.9	9.9	5.4	16.7	3.6	13.1	2.3	12.2
Hindi	4,622	1.8	6.3	1.1	3.5	0.7	2.5	0.4	2.4
Maltese	3,545	1.4	4.8	0.7	2.1	0.4	1.4	0.3	1.4
Spanish	3,046	1.2	4.1	1.5	4.8	1.1	4.1	0.8	4.1
Italian	2,918	1.1	4.0	1.9	5.8	2.0	7.3	1.5	8.1
Cantonese	2,862	1.1	3.9	2.6	8.0	2.9	10.7	1.9	10.1
Samoan	2,343	0.9	3.2	0.5	1.5	0.3	0.9	0.2	0.9
Greek	2,331	0.9	3.2	1.2	3.8	2.1	7.7	1.4	7.5
Turkish	2,053	0.8	2.8	0.7	2.3	0.4	1.6	0.3	1.6
Croatian	2,023	0.8	2.7	0.8	2.6	0.6	2.1	0.4	2.2
Mandarin	1,603	0.6	2.2	1.2	3.8	1.6	5.8	1.0	5.5
Polish	1,585	0.6	2.1	0.5	1.5	0.4	1.3	0.3	1.4
Korean	1,273	0.5	1.7	0.5	1.7	0.7	2.7	0.5	2.5
Persian	1,233	0.5	1.7	0.4	1.3	0.3	1.1	0.2	1.0
Tamil	1,145	0.4	1.6	0.4	1.2	0.3	1.1	0.2	1.0
Serbian	973	0.4	1.3	0.7	2.2	0.4	1.6	0.3	1.7
Vietnamese	955	0.4	1.3	3.0	9.3	1.7	6.1	1.1	5.7
German	799	0.3	1.1	0.3	1.0	0.4	1.3	0.3	1.9
Sinhalese	780	0.3	1.1	0.2	0.5	0.1	0.5	0.1	0.4
French	741	0.3	1.0	0.2	0.7	0.3	1.1	0.2	1.2
Hungarian	724	0.3	1.0	0.2	0.5	0.2	0.7	0.1	0.7
Indonesian	715	0.3	1.0	0.2	0.6	0.4	1.6	0.3	1.5
Netherlandic	429	0.2	0.6	0.1	0.4	0.2	0.6	0.2	0.8
Russian	417	0.2	0.6	0.2	0.6	0.3	1.2	0.2	1.2
Portuguese	404	0.2	0.5	0.1	0.5	0.3	1.0	0.2	1.1
S. Slavic lang.	354	0.1	0.5	0.1	0.4	0.1	0.3	0.1	0.4
Other Chinese	352	0.1	0.5	0.4	1.3	0.4	1.3	0.2	1.3
Macedonian	306	0.1	0.4	0.5	1.5	0.5	1.8	0.5	2.6
Khmer	114	0.0	0.2	0.4	1.4	0.2	0.7	0.1	0.7
Japanese	99	0.0	0.1	0.0	0.1	0.3	0.9	0.2	0.9
Aust'n Indig. lang.	33	0.0	0.0	0.0	0.0	0.0	0.0	0.0	0.1
Total LOTE*	73,801	28.8	100.0	32.2	100.0	27.3	100.0	18.8	100.0
English	167,212	65.2	-	61.9	-	65.7	-	75.0	-

* LOTE = Language other than English

Source: ABS Census 2001, Table B08

5 EDUCATIONAL ACHIEVEMENTS

Type of educational institution attending

	Blacktown		GWS	Sydney	NSW
	Persons	%	% total	% total	% total
Pre-school	4,466	1.7	1.6	1.5	1.6
Infants/Primary	28,041	10.9	10.1	8.6	9.1
Secondary	18,939	7.4	7.6	6.7	6.9
TAFE	8,215	3.2	3.2	2.9	3.0
University/other tertiary	6,356	2.5	3.0	4.3	3.6
Other	1,595	0.6	0.8	1.0	0.8
Not attending	173,888	67.8	67.9	68.0	68.9
Not stated	13,695	5.3	5.3	5.8	5.2
Overseas visitors	1,169	0.5	0.5	1.2	1.0
Total	256,364	100.0	100.0	100.0	100.0

Source: ABS Census 2001, Table B11

Qualifications (Persons aged 15 years and over)

Level of qualification	Blacktown		GWS	Sydney	NSW
	Persons	%	% total	% total	% total
Post-graduate degree	2,382	1.2	1.5	2.9	2.2
Graduate diploma/certificate	1,175	0.6	0.8	1.3	1.2
Bachelor degree	14,808	7.8	8.1	12.3	10.1
Advanced diploma & diploma	9,481	5.0	5.6	6.9	6.2
Certificate	30,497	16.0	16.5	15.3	16.4
Not stated	23,284	12.2	12.0	12.7	12.3
Not applicable	109,084	57.2	55.4	48.7	51.5
Total	190,711	100.0	100.0	100.0	100.0

Source: ABS Census 2001, Table B23

6 OCCUPATION

	Blacktown		GWS	Sydney	NSW
	Persons	%	% total	% total	% total
Managers & administrators	5,477	5.0	6.7	9.0	9.4
Professionals	13,827	12.7	15.2	21.2	19.1
Associate professionals	10,371	9.5	10.5	11.8	11.6
Tradespersons & related workers	14,589	13.4	13.6	11.1	11.9
Advanced clerical & service workers	4,001	3.7	4.2	4.5	4.2
Intermediate clerical, sales & service workers	21,741	20.0	18.5	17.2	16.5
Intermediate production and transportation	14,318	13.2	10.7	7.4	7.9
Elementary clerical, sales & service workers	11,237	10.3	9.3	9.1	9.3
Labourers & related workers	10,775	9.9	8.8	6.6	8.0
Inadequately described	997	0.9	0.9	0.9	0.8
Not stated	1,544	1.4	1.4	1.2	1.2
Total persons	108,877	100.0	100.0	100.0	100.0

Source: ABS Census 2001, Table B27

7 EMPLOYMENT

Persons aged 15 years and over

	Blacktown		GWS	Sydney	NSW		
	M	F	Total	%	% total	% total	% total
Employed	60,944	47,933	108,877	42.5	43.7	45.4	43.1
Unemployed	5,367	3,686	9,053	3.5	3.1	2.8	3.1
In labour force	66,311	51,619	117,930	61.8	60.9	61.4	59.3
Not in labour force	23,187	41,298	64,485	33.8	34.7	33.4	36.0
Unemployment	-	-	-	7.7	7.4	6.1	7.2
Participation	-	-	-	67.7	68.7	69.3	65.7

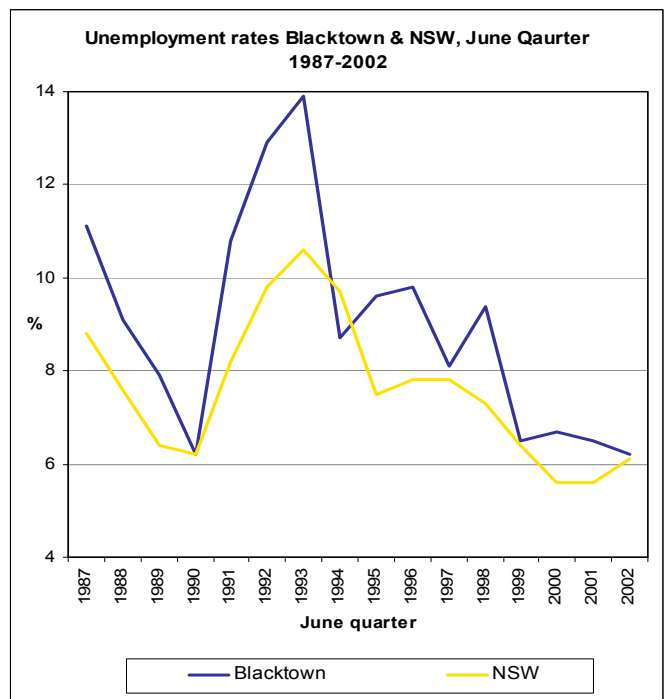
Source: ABS Census 2001, Table B22

8 FAMILIES & RELATIONSHIPS

Marital status (persons aged 15 years & over)

	Blacktown		GWS	Sydney	NSW
	Persons	%	% total	% total	% total
Married	100,963	39.4	41.1	40.6	40.8
Separated	7,600	3.0	2.7	2.5	2.6
Divorced	13,093	5.1	5.0	5.5	5.7
Widowed	9,237	3.6	4.1	4.7	5.1
Never married	60,772	23.7	23.7	26.5	25.0
Persons under 15 years	64,699	25.2	23.4	20.2	20.8
Total	256,364	100.0	100.0	100.0	100.0

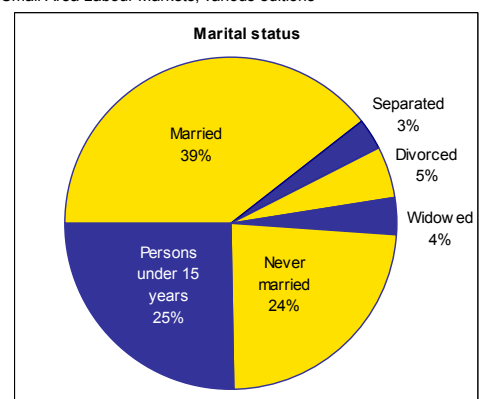
Source: ABS Census 2001, Table B04

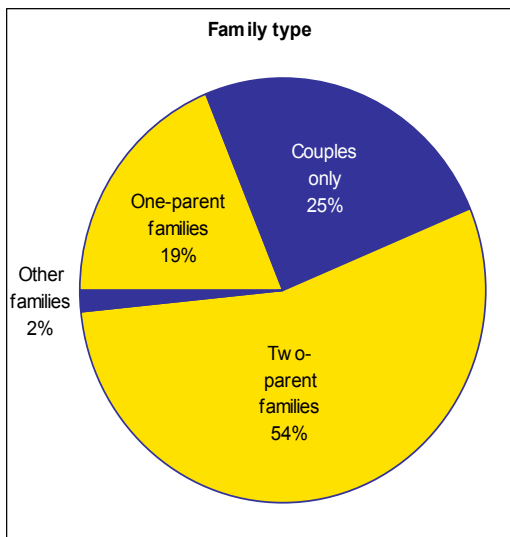


Unemployment rate (June quarter)

	1987	1988	1989	1990	1991	1992
Blacktown	11.1	9.1	7.9	6.2	10.8	12.9
NSW	8.8	7.6	6.4	6.2	8.2	9.8
	1993	1994	1995	1996	1997	1998
Blacktown	13.9	8.7	9.6	9.8	8.1	9.4
NSW	10.6	9.7	7.5	7.8	7.8	7.3
	1999	2000	2001	2002		
Blacktown	6.5	6.7	6.5	6.2		
NSW	6.4	5.6	5.6	6.1		

Source: DEWR Small Area Labour Markets, various editions





Family types

	Blacktown	GWS	Sydney	NSW
One parent families with:	Families	%	% total	% total
Dependent children (0-14 years)	6,042	8.9	7.1	6.0
Dependent children & others	2,810	4.2	3.9	3.6
Non dependent children	3,889	5.8	5.5	5.1
Total	12,741	18.8	16.4	15.5
Couples only	16,799	24.8	26.9	32.4
Two-parent families with:	Families	%	% total	% total
Dependent children (0-14 years)	19,738	29.2	28.3	26.2
Dependent children & others	10,316	15.3	16.0	14.3
Non dependent children	6,922	10.2	10.8	10.0
Total	36,976	54.7	55.1	47.8
Other families	1,106	1.6	1.6	2.1
Total	67,622	100.0	100.0	100.0

Source: ABS Census 2001, Table B17

9 HOUSING

Dwelling structure (Occupants in private dwellings)

	Blacktown	GWS	Sydney	NSW
	Persons	%	% total	% total
Separate house	225,973	89.4	84.0	77.4
Semi-detached, row or terrace, townhouse	18,527	7.3	7.9	8.0
Flat, unit or apartment	6,448	2.6	7.2	12.8
Caravan, cabin, houseboat	514	0.2	0.1	0.7
Impoverished home, tent, sleepers out	58	0.0	0.0	0.1
House/flat attached to shop or office, etc	230	0.1	0.2	0.4
Not stated	1,103	0.4	0.8	0.7
Total	252,853	100.0	100.0	100.0

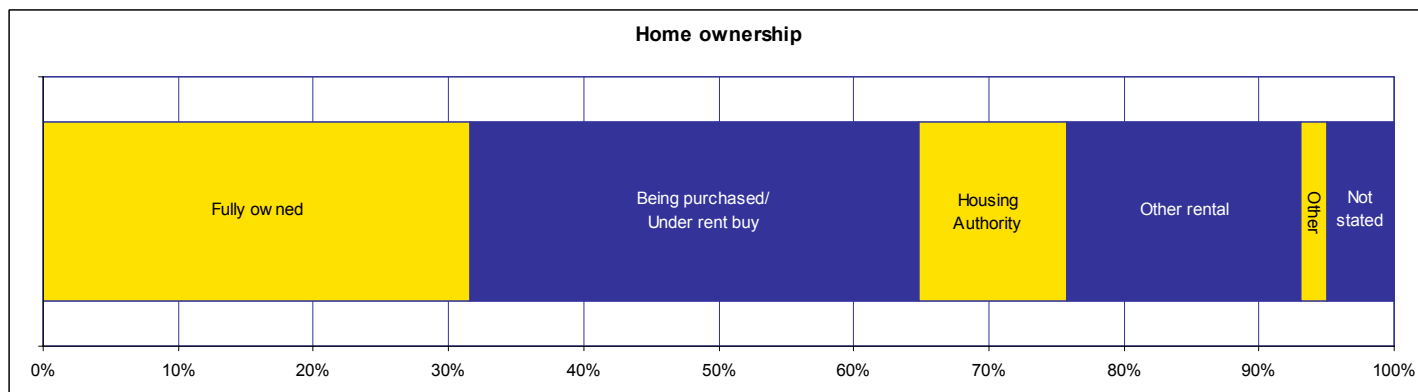
Source: ABS Census 2001, B18

Home ownership/tenure

	Blacktown	GWS	Sydney	NSW
	Dwellings	%	% total	% total
Fully owned *	25,937	31.5	37.1	41.1
Being purchased/Under rent buy	27,306	33.1	29.2	23.3
Rented : Housing Authority	9,080	11.0	7.4	4.9
Rented : Other rental	14,178	17.2	18.8	22.3
Rented : Landlord not stated	277	0.3	0.3	0.3
Rented : Total	23,535	28.5	26.5	27.5
Other tenure	1,552	1.9	2.3	2.8
Tenure type not stated	4,128	5.0	5.0	5.3
Total	82,458	100.0	100.0	100.0

* includes "being occupied under life tenure"
Source: ABS Census 2001, B19

Home ownership



10 INCOME

Weekly individual income

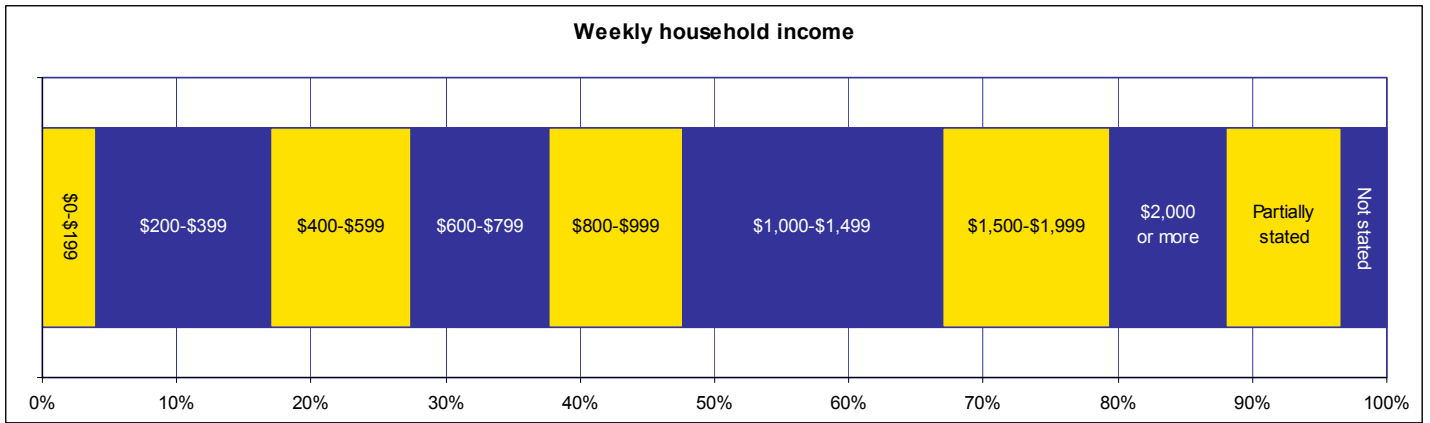
	Blacktown	GWS	Sydney	NSW
	Persons	%	% total	% total
\$0-\$199	37,650	19.6	20.1	17.2
\$200-\$399	33,817	17.6	17.9	20.1
\$400-\$599	32,301	16.9	15.9	15.0
\$600-\$799	25,354	13.2	12.2	10.7
\$800-\$999	14,147	7.4	7.1	6.6
\$1,000-\$1,499	12,685	6.6	7.2	7.5
\$1,500 or more	3,830	2.0	2.9	4.7
Not stated	16,219	8.5	8.3	8.1
Total	191,664	100.0	100.0	100.0

Source: ABS Census 2001, Table B13

Weekly household income

	Blacktown	GWS	Sydney	NSW
	Households	%	% total	% total
\$0-\$199	3,176	4.0	4.1	4.8
\$200-\$399	10,375	13.0	13.1	15.9
\$400-\$599	8,335	10.4	10.7	12.1
\$600-\$799	8,184	10.3	9.9	10.1
\$800-\$999	7,942	10.0	9.3	8.6
\$1,000-\$1,499	15,410	19.3	18.2	15.7
\$1,500-\$1,999	9,909	12.4	12.3	10.9
\$2,000 or more	6,881	8.6	10.2	10.2
Partially stated	6,840	8.6	8.9	8.0
Not stated	2,712	3.4	3.4	3.5
Total	79,764	100.0	100.0	100.0

Source: ABS Census 2001, Table B31



11 BUSINESSES BY INDUSTRY

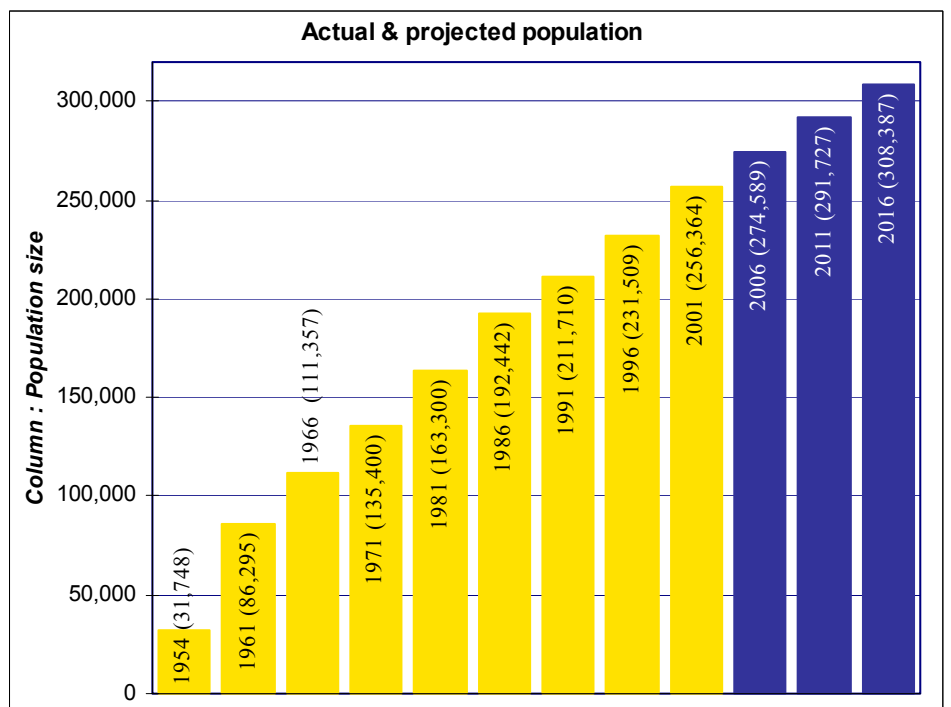
Industry	\$0-\$49,999	\$50,000-\$99,999	\$100,000-\$499,999	\$500,000 & over	Unknown	Total	%
Estimated number of businesses							
Agriculture, Forestry and Fishing	131	79	70	5	0	285	1.5%
Mining	0	0	0	0	0	0	0.0%
Manufacturing	422	466	497	201	0	1,586	8.2%
Electricity, Gas And Water Supply	0	0	0	0	0	0	0.0%
Construction	1,407	2,176	808	133	2	4,526	23.5%
Wholesale Trade	222	196	293	203	0	914	4.7%
Retail Trade	505	549	829	180	0	2,063	10.7%
Accommodation, Cafes And Restaurants	35	42	75	19	1	172	0.9%
Transport And Storage	714	652	312	39	1	1,718	8.9%
Communication Services	280	245	18	0	0	543	2.8%
Finance And Insurance	401	192	84	8	0	685	3.6%
Property And Business Services	1,708	1,176	617	113	1	3,615	18.8%
Government Administration And Defence	0	0	0	0	0	0	0.0%
Education	103	13	80	0	0	196	1.0%
Health And Community Services	107	53	282	0	0	442	2.3%
Cultural And Recreational Services	238	81	48	0	0	367	1.9%
Personal And Other Services	394	204	60	0	0	658	3.4%
Industry Not Stated	13	0	0	0	0	13	0.1%
Not publishable	202	280	878	106	0	1,466	7.6%
All Industries	6,882	6,404	4,951	1,007	5	19,249	100.0%

Note: Estimated number of businesses are aggregated from postcode areas located in Blacktown City. Due to the nature of the unpublishable data provided by the ABS, the data would be under-estimates of the actual number of business in the area, and caution should be applied when using the data. Source: ABS ABR June 2001

12 POPULATION PROJECTION

	1954	1961	1966
Blacktown	31,748	86,295	111,357
Growth	-	171.8%	29.0%
	1971	1981	1986
Blacktown	135,400	163,300	192,442
Growth	21.6%	20.6%	17.8%
	1991	1996	2001
Blacktown	211,710	232,219	256,364
Growth	10.0%	9.7%	10.7%
	2006	2011	2016
Blacktown	274,589	291,727	308,387
Growth	7.1%	6.2%	5.7%

Source: Based on ABS custom table, 1996.



General Information

Total Population as at 2001	256,364 (127,251 males) (129,113 females)
Births 2000	4,492
Deaths 2000	1,169
Natural Increase in 2000	3,323
Area	246.9 km ²
Population density	1,038 persons per km ²
Ratepayers 2001	83,187
Number of suburbs	45
Number of Council Wards	5
Electorates	5 State; 3 Federal
Median Age	31
Median Individual weekly income	\$400-499
Median Household weekly income	\$800-999
Mean household size	3.1 persons (as at 2001 Census)
Industrial Estates	10 existing
Building Approvals December 2000 – September 2001	2,149 residential dwellings
Business Centres	Over 70 ranging in size from Sub-Regional Centres (Blacktown and Mt Druitt); District Centres (Seven Hills, Riverstone, Plumpton, Quakers Hill and the proposed centre at Parklea); and Local Centres (large and small scale) which serve local, retail and commercial needs.
Hospitals	2 Public (Blacktown, Mt Druitt), 1 Private (Minchinbury)
Community Health centres	4
Primary and secondary schools 2002	Approximately 95
Technical Colleges	3 – Blacktown, Mt Druitt, Quakers Hill (Nirimba)
University Campuses	1 – UWS Hawkesbury (Nirimba)
Average Yearly Rainfall	860mm per annum
Average Summer Temperature	17.1 - 27.2 Celsius
Ave Winter Temperature	6.9 - 17.8 Celsius
Average Annual Humidity	62.9%
Elevation	58.5m above sea level
Parks & Reserves	Approximately 800
Libraries	4
Pools	4
Senior Citizens Centres	6
Council Neighbourhood and Community Centres	30
Council Community Mini Buses	4
Council Child Care Centres	51 Long Day Care Centres; 47 Pre Schools & Kindergartens; 9 Before and After School Care Programs; 4 Occasional Care; 3 playgrounds
Local Roads	Approximately 1,030km
Regional Roads	Approximately 100km
Railway Stations	10 on 2 Lines (Main Western Line and Richmond Line)

Sources: ABS Census 2001, Tables B01, B33; Blacktown City Council Community Information Directory, 5th edition, November 2002

Blacktown past

ABORIGINAL HISTORY 40,000 B.C. – PRESENT

The Aborigines of the Western Cumberland Plain referred to themselves as the Darug (also spelt as Dharug, Daruk, Dharuk and Dharruk). The three Clans of the Blacktown area included: Gomerigal – South Creek; Wawarawarry – Eastern Creek; and Warmuli – Prospect. The impact of white settlement meant that there was competition for land and resources. While numbers declined there has always been an Aboriginal presence in Blacktown and today, this is reflected in the name of the City and its suburb Dharruk and the fact that Blacktown has the largest Aboriginal population in the State.

EUROPEAN HISTORY

1788	Governor Phillip travelled to Prospect Hill.
1791	Governor Phillip granted 12 land Grants.
1804	The Battle of Vinegar Hill was fought at Rouse Hill on 5 March. Convicts escaping from the Castle Hill barracks clashed with government troops under Major George Johnston, declaring themselves to be for "Liberty or Death". The convicts were easily defeated and 15 died in the battle or its aftermath.
1820s	A number of land grants made including two to Aborigines from the local Darug Tribe including Colebee (of the Richmond Boorooberongal Clan) and Nurranginy (of the Blacktown Gomerigal South Creek Clan).
1823	The Native Institute known as "Black Town" was built at Plumpton. The Native Institution was a residential School for Aboriginal children established on a reserve of land by the Colonial Government of NSW to assimilate Aborigines into European ways. The Blacktown Native Institution ran until it was abandoned in 1833. The Native Institution site is on the corner of Richmond Road and Rooty Hill Road North.
1850s & 60s	Original land Grants sub-divided. The coming of the Railway (Great Western Line in 1860 and Richmond Line in 1864) with the first Railway Station called "Black Town Road Station". By 1862 it had become "Blacktown" officially.
1880s	Thousands of residential lots released in Mt Druitt, Rooty Hill and Marsden Park.
1906	The Shire of Blacktown was created by the Local Government Act 1906 with the first Council meeting held at the Rooty Hill School of Arts.
1930	Electricity comes to Blacktown.
1950s	Large residential and industrial land release.
1961	Blacktown becomes a Municipality on 17 June.
1979	Blacktown proclaimed a City on 7 March.
2000	Aquiline Reserve, Rooty Hill, hosted the Sydney 2000 Olympics Women's Softball and selected Baseball competitions.

Source: Blacktown City Council Community Information Directory, various editions

Blacktown today

- The City of Blacktown is situated approximately 35 km from Sydney on the Cumberland Plain in the heart of Western Sydney bounded by the Local Government Areas (LGAs) of Baulkham Hills, Hawkesbury, Holroyd, Parramatta, and Penrith and occupying an area of 246.9 km².
- Over the last several decades, Blacktown City's growth has been sustained and rapid, contributing to its present status as the most populous City and the twelfth fastest growing LGA in New South Wales, and the third largest LGA in Australia behind Brisbane City and the Gold Coast.
- Large scale urban development has contributed to Blacktown City's continued population growth and to the development of new estate areas which has led to the establishment of 45 suburbs to date. Blacktown City therefore encompasses a mix of older established areas and new developing areas.
- Blacktown City's diverse land use also continues to attract developers and retailers to the largest quantity of zoned and service industrial and commercial land throughout NSW.
- In addition to being large, Blacktown City's population is culturally and linguistically diverse with over 104 countries and 80 languages represented within the community.
- Blacktown City is youthful, with almost half the population (122,611, 47.8%) under 30 years of age. While it is youthful, it is also growing older, with significant increases in the 50 years and over population. This population increased by 26.3% between 1996 and 2001.
- Access into and out of Blacktown City is provided by the transport links inclusive of the Western Railway Line from Sydney, the Greater Western Highway, Richmond Road and the M2 and M4 Motorways. There are approximately 1,030km of local roads and 100 km of Regional roads within Blacktown City.
- Eastern Creek, Ropes Creek, South Creek, and Prospect Creek provide a natural buffer between areas of urban development.
- A total of eight creeks and tributaries form part of the two major catchments of the area including the Nepean Hawkesbury Catchment and the Upper Parramatta River Catchment.
- Blacktown City's Central Business District/City Centre provides residents with numerous shopping facilities and services and is the Commercial Centre for government departments and local business.

Source: ABS Census 2001; Blacktown City Council

Key facts:

- Around 1 in every 74 Australians is a resident of Blacktown City.
- Blacktown City is the most populous Local Government Area in NSW and the third largest LGA in Australia behind Brisbane City and the Gold Coast.
- Blacktown City recorded the twelfth largest increase in resident population in NSW in the Intercensal Period (1996-2001) and the second largest in NSW with an increase of 24,145 persons, average annual growth rate of 1.9%. In numbers, this represented an increase of 4,800 persons per annum.
- Between the 1996 and 2001 Censuses, Blacktown City accounted for 6.4% of the overall population of Sydney but more than 9.4% of its population growth.
- Blacktown City's population comprises almost 15% of Greater Western Sydney's total population.
- Blacktown City has the largest Aboriginal and Torres Strait Islander population in the State with a total population of 6,093 persons.
- 73,801 residents (28.8%) in Blacktown City aged 5 years and over speak a language other than English.
- The number of overseas arrivals since 1996 was 14,396 persons. Major countries of birth for Blacktown City's migrant populations are the Philippines (5.3%), India (1.7%), Fiji (1.7%), and Malta (1.3%).
- The median Individual Weekly Income range for Blacktown City is \$400-499. This is slightly higher than the NSW median of \$300-399. The median Household Weekly Income range is \$800-999, same as the state median.
- 102,557 Blacktown City residents (40.0%) are under the age of 25 years. 15.1% (38,800) are over the age of 55 years.
- One quarter of the population (25.2%) are of dependent age (14 years and under. This represents over 64,484 persons.
- 70.2% of two parent families have dependent children of 14 years or under. 60.5% of all single parent families also have dependent children under 14 years of age.
- 89.4% of residents (225,973) live in detached housing. This is equivalent to 71,444 dwellings (83.1%).
- 37.1% of the population were living elsewhere during the intercensal period (1996-2001).
- The proportion of Blacktown city residents holding a degree or higher qualification almost doubled between the two most recent Censuses (1996-2001) with an increase of 47.1% from a total of 12,487 persons in 1996 to 18,365 in 2001.
- Most people travel to work by car either as driver (72.8%) or as passenger (9.0%).
- On average, Blacktown City's weekly household consumption expenditure of \$742.35 is higher than the State average of \$674.32.
- Blacktown City has the largest stock of zoned and serviced industrial land in Sydney.

Source: ABS Census 2001;

Places of interest/historical significance

Battle of Vinegar Hill Memorial - Blacktown Bicentennial Museum – Blacktown Leisure Centre (Stanhope) – Blacktown Olympic Park
Blacktown Showground – Eastern Creek International Raceway – Featherdale Wildlife Park – Mt Druitt Heritage Walk
Mt Druitt Waterholes Remembrance Gardens – Nurragingy Reserve – Prospect Reservoir – Plumpton Park Wetland
Rouse Hill House - Rouse Hill Regional Park - St Bartholomews Church (Prospect) – Valentines Soccer Park – Wonderland Sydney

NOTE – Greater Western Sydney (GWS) comprises the following 14 Local Government Areas: Auburn, Bankstown, Baulkham Hills, Blacktown, Blue Mountains, Camden, Campbelltown, Fairfield, Hawkesbury, Holroyd, Liverpool, Parramatta, Penrith, and Wollondilly.

ABBREVIATIONS – GWS = Greater Western Sydney; LGA = Local Government Area

COMPILED BY – Western Sydney Regional Information & Research Service (WESTIR) Limited in March 2003.

FURTHER INFORMATION – contact Blacktown City Council's Community and Cultural Development Unit on Ph: (02) 9839 6000

COMMENTS – If you have any comments with regards to this Brochure and ideas for additional information to be included in future Brochures please write to Council as follows: Comments, Blacktown City Statistical Brochure, Blacktown City Council, PO Box 63, Blacktown NSW 2148

DISCLAIMER – This Brochure presents a brief/basic demographic overview of the Blacktown City Local Government Area using data predominantly from the Australian Bureau of Statistics 2001 Census of Population and Housing and the ABS Regional Profile 1998. Blacktown City Council does not accept responsibility for any liability, loss or damage caused or alleged to have been caused by the use of the information contained in this Brochure.