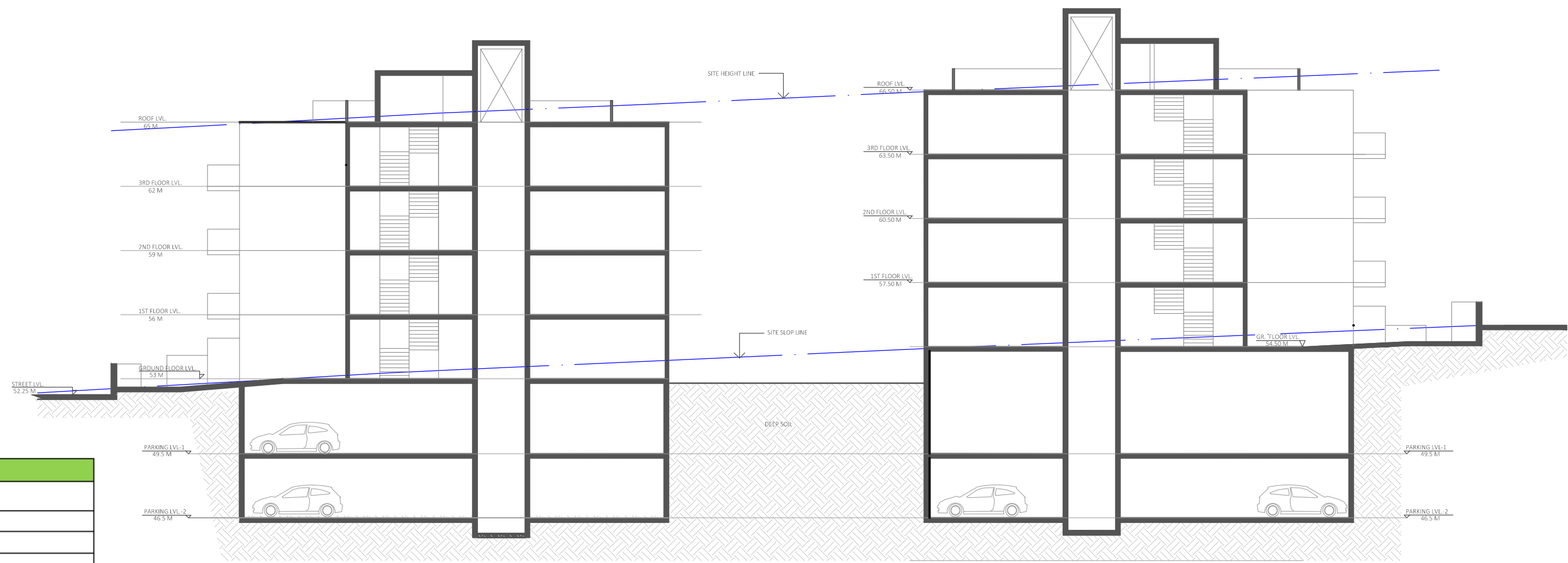


SECTION-1A



SECTION-1B

Building Elements	Material	Detail
External walls	Lightweight walls - CSR 168 wall system or the like	R1.5 Bulk Insulation
Internal walls within Units	Plasterboard on studs	-
Common walls between units	Lightweight walls - CSR 223 wall system or the like	R1.5 Bulk Insulation
Common walls between units and the lobbies	Lightweight walls - CSR 168 wall system or the like	R1.5 Bulk Insulation
Common wall between units and fire stairs/lifts	Concrete + furring channel +gGyprock	R1.0 Bulk insulation
Ceilings	Plasterboard	-
Floors	Concrete	-
Roof	Concrete	R2.0 Bulk Insulation
WINDOWS		
Aluminium frame, double glazed or similar <i>Sliding windows/doors and fixed windows:</i>	U value 4.80 or less and SHGC 0.53 +/- 5% to units - Building A: E6 G, E7 G, E7 L3, W8 L2 Building B: E3 G, W3 L2, W6 L3	
Aluminium frame, double glazed or similar <i>Awning windows only:</i>	U value 4.80 or less and SHGC 0.51 +/- 5% to units – Building A: E6 G, E7 G, E7 L3, W8 L2 Building B: E3 G, W3 L2, W6 L3	
Aluminium frame, single glazed low e <i>Sliding windows/doors and fixed windows:</i>	U value 5.40 or less and SHGC 0.58 +/- 5% Building A: E3 G, E3 L1, E6 L1, E7 L1, E3 L2, E6 L2, E7 L2, E3 L3, E6 L3, WG 3, WG 4, WG 5, W3 L1 Building B: E4 G, E3 L1, E6 L1, E3 L2, E6 L2, E3 L3, E6 L3, E7 L3, W3 G, W3 L1, W6 L1, W6 L2, W3 L3, W7 L3	
Aluminium frame, single glazed low e <i>Awning windows only:</i>	U value 5.40 or less and SHGC 0.43 +/- 5% Building A: E3 G, E3 L1, E6 L1, E7 L1, E3 L2, E6 L2, E7 L2, E3 L3, E6 L3, WG 3, WG 4, WG 5, W3 L1 Building B: E4 G, E3 L1, E6 L1, E3 L2, E6 L2, E3 L3, E6 L3, E7 L3, W3 G, W3 L1, W6 L1, W6 L2, W3 L3, W7 L3	
Aluminium frame, single glazed clear <i>Sliding windows/doors and fixed windows:</i>	U value 6.70 or less and SHGC 0.70 +/- 5% rest of units	
Aluminium frame, single glazed clear <i>Awning windows only:</i>	U value 6.70 or less and SHGC 0.57 +/- 5% rest of units	
Skylights - Double glazed		
Lighting: Units have been rated without downlights		
Bathroom, Ensuite and Laundry Exhaust fans to have self-closing dampers		

Note: If any of the elements nominated above change after the DA (Development Application) has been issued, a revised assessment should be undertaken prior to the Construction Certificate being issued with construction drawings.

BASIX COMMITMENTS NOTES				
* TO BE READ IN CONJUNCTION WITH APPROVED BASIX REPORT*				
WATER				
Fixtures	All Shower Heads 3 star(>6 but<=7.5L/min)	All toilet flushing systems 4 star	All kitchen taps 4 star	All bathroom taps 5 star
Rainwater tank	Central rainwater tank, size 5000L to collect run-off from at least 100m2 of roof area and connection to allow for irrigation of 600m2 of common landscape are			
Fire Sprinkler	Must be configured so that fire sprinkler test water is contained within the fire sprinkler system for re-use, rather than disposed			
Appliances:	Dishwashers - 5.0 star water rating			
	Swimming pool- volume 55kLs			
ENERGY	Hot water system: Central gas fired storage (manifolded)			
	Bathroom ventilation system: Individual fan, ducted to façade or roof manual switch on/off			
	Kitchen ventilation system: Individual fan, ducted to façade or roof manual switch on/off			
	Laundry ventilation system: Individual fan, ducted to façade or roof manual switch on/off			
	Cooling system: air-conditioning 1 Phase – EER 3.0 – 3.5 (zoned)			
	Heating system: air-conditioning 1Phase – EER 3.0 – 3.5 (zoned)			
	Artificial lighting: As per BASIX			
	Natural lighting: As per BASIX			
	Appliances: Gas cooktop & electric oven Refrigerators: 3 star Dishwashers: 3.5 star energy rating Clothes dryers: 2 star Indoor or sheltered clothes drying line Well vented fridge space			
COMMON AREAS	Refer to approved BASIX cert			

6.2

Average star rating

NATIONWIDE HOUSE ENERGY RATING SCHEME

www.nathers.gov.au

Certificate no.: 0001923080

Assessor Name: Thomas Ruck

Accreditation no.: VIC/BDV/12/1456

Certificate date: 18 September 2017

Dwelling Address: 84 Tallawong Road Rouse Hill, NSW 2155

www.nathers.gov.au

PROPOSED LOT 1 - SECTIONS

07.08.17



SCALE 1 : 200



ARCHIDROME  
SUITE # 2, 25 MONTVIEW PDE, HORNSBY HEIGHTS, N. S. W. 2077  
JANHVI@ARCHIDROME.NET

DWG NO.  
L1- 10